

12

**UTENSILI PER AUTOCARROZZERIA
BODY REPAIR TOOLS**

Art. 1201.TP



UNI	ISO	DIN
---	---	---

MARTELLO PROFESSIONALE PER BATTILAMIERA A TESTA LISCIA TONDA E PENNA RICURVA, MANICO IN NOCE PREGIATO CON SAGOMATURE LATERALI PER EFFETTO FRUSTA, PESO gr. 450, LUNGHEZZA mm 330.

PROFESSIONAL HAMMER WITH ONE ROUND FLAT HEAD AND ONE CURVED POINT, HANDLE IN HICKORY WOOD WITH SIDE SHAPES FOR WHIPLASH EFFECT, WEIGHT gr. 450, LENGHT mm 330

Art.	L mm	g	
1201.TP	330	450	1

Art. 1202.TQ



UNI	ISO	DIN
---	---	---

MARTELLO PROFESSIONALE PER BATTILAMIERA A DOPPIA TESTA LISCIA, TONDA E QUADRA, MANICO IN NOCE PREGIATO CON SAGOMATURE LATERALI PER EFFETTO FRUSTA, PESO gr. 450, LUNGHEZZA mm 330.

PROFESSIONAL HAMMER WITH DOUBLE HEAD ONE ROUND FLAT AND ONE SQUARE FLAT, HANDLE IN HICKORY WOOD WITH SIDE SHAPES FOR WHIPLASH EFFECT, WEIGHT gr. 450, LENGHT mm 330

Art.	L mm	g	
1202.TQ	330	450	1

Art. 1203.QL



UNI	ISO	DIN
---	---	---

UNI	ISO	DIN
---	---	---

MARTELLO PROFESSIONALE PER BATTILAMIERA A TESTA SINGOLA QUADRA LISCIA, MANICO IN NOCE PREGIATO CON SAGOMATURE LATERALI PER EFFETTO FRUSTA, PESO gr. 350, LUNGHEZZA 330 mm.

Art.	L mm	g	
1203.QL	330	350	1

Art. 1204.QZ



UNI	ISO	DIN
---	---	---

MARTELLO PROFESSIONALE PER BATTILAMIERA A TESTA SINGOLA QUADRA ZIGRINATA, MANICO IN NOCE PREGIATO CON SAGOMATURE LATERALI PER EFFETTO FRUSTA, PESO gr. 350, LUNGHEZZA 330 mm.

Art.	L mm	g	
1204.QZ	330	350	1

Art. 1205.PA



UNI	ISO	DIN
---	---	---

MARTELLO PROFESSIONALE DA CARROZZIERE A DOPPIA TESTA CON AMMORTIZZATORE IN GOMMA E SAGOMATURA TESTA TONDA AD EFFETTO ROTANTE, MANICO IN NOCE PREGIATO.

PROFESSIONAL HAMMER WITH ONE ROUND FLAT HEAD WITH SHOCK ABSORBING GUM AND KNURLED SURFACE WITH PIVOTING ACTION PLUS ONE STRAIGHT POINT, HANDLE IN HICKORY WOOD WITH SIDE SHAPES FOR WHIPLASH EFFECT, WEIGHT gr. , LENGHT mm

Art.	L mm	g	
1205.PA	300	380	1

Art. 1210.CP



UNI	ISO	DIN
---	---	---

LEVA PROFESSIONALE PER BATTILAMIERA A CUCCHIAIO PIEGATA CON TESTA SOTTILE, PESO KG. 0,5, LUNGHEZZA 250 mm, LARGHEZZA 30 mm.

PROFESSIONAL CURVED SPOON AT 40° AND THIN HEAD FOR PANEL BEATERS, WEIGHT KG 0,5, LENGHT mm 250, WIDTH mm 30

Art.	L mm	g	
1210.CP	250	500	1

Art. 1211.GP



UNI	ISO	DIN
---	---	---

DOPPIA LEVA PROFESSIONALE PER BATTILAMIERA A GOMITO E A PALETTA PIANA LARGA, PESO KG 2,2, LUNGHEZZA 510 mm, LARGHEZZA 59 mm.

PROFESSIONAL DOUBLE SPOON WITH ONE ELBOW BEND BLADE AND ONE LARGE FLAT BLADE FOR PANEL BEATERS, WEIGHT KG 2,2, LENGHT mm 510, WIDTH mm 59

Art.	L mm	kg	
1211.GP	510	2,2	1

Art. 1212.CR



UNI	ISO	DIN
---	---	---

LEVA PROFESSIONALE PER BATTILAMIERA A CUCCHIAIO CORTA E A PALETTA PIANA LARGA , LUNGHEZZA 290 mm, LARGHEZZA 51 mm.

PROFESSIONAL LIGHT CURVED SPOON WITH SHORT SHAPE AND LARGE FLAT BLADE FOR PANEL BEATERS, WEIGHT KG 0,8 LENGHT mm 290, WIDTH mm 51

Art.	L mm	kg	
1212.CR	290	800	1

Art. 1219.TM



UNI	ISO	DIN
---	---	---

TASSO MULTIFUNZIONE PICCOLO PER CARROZZIERE, FINITURA VERNICIATA E TERMINALI LUCIDATI.

MULTIPURPOSE DOLLY SMALL SIZE FOR PANEL BEATER, POWDER COATING FINISH AND HAND POLISH TIPS

Art.	L mm	g	
1219.TM	60	300	1

Art. 1220.TV



UNI	ISO	DIN
---	---	---

TASSO PROFESSIONALE CON PROFILO A VIRGOLA PER BATTILAMIERA, PESO KG 1,2, LUNGHEZZA 132 mm, LARGHEZZA 58 mm, ALTEZZA 45 mm.

PROFESSIONAL DOLLY WITH COMMA SHAPE FOR PANEL BEATERS, WEIGHT KG 1,2, LENGHT mm 132, WIDTH mm 58, HEIGHT mm 45

Art.	L mm	kg	
1220.TV	132	1,2	1

Art. 1221.TC



UNI	ISO	DIN
---	---	---

TASSO PROFESSIONALE CON PROFILO LISCI CURVO PER BATTILAMIERA, PESO KG 1,2, LUNGHEZZA 120 mm, LARGHEZZA 58 mm, ALTEZZA 29 mm.

PROFESSIONAL DOLLY WITH CURVED FLAT SHAPE FOR PANEL BEATERS, WEIGHT KG 1,2, LENGHT mm 120, WIDTH mm 58, HEIGHT mm 29

Art.	L mm	kg	
1221.TC	120	1,2	1

Art. 1223.TR



UNI	ISO	DIN
---	---	---

TASSO PROFESSIONALE CON PROFILO A ROTAIA PER BATTILAMIERA, PESO KG 1,1, LUNGHEZZA 75 mm, LARGHEZZA 73 mm, ALTEZZA 66 mm.

PROFESSIONAL DOLLY WITH RAIL SHAPE FOR PANEL BEATERS, WEIGHT KG 1,1, LENGHT mm 75, WIDTH mm 73, HEIGHT mm 66

Art.	L mm	kg	
1223.TR	75	1,1	1

Art. 1224.TZ



UNI	ISO	DIN
---	---	---

TASSO PROFESSIONALE CON PROFILO ZIGRINATO CURVO PER BATTILAMIERA, PESO KG 1,2, LUNGHEZZA 120 mm, LARGHEZZA 58 mm, ALTEZZA 28 mm.

PROFESSIONAL DOLLY WITH CURVED KNURLED SHAPE FOR PANEL BEATERS, WEIGHT KG 1,2, LENGHT mm 120, WIDTH mm 58, HEIGHT mm 28

Art.	L mm	kg	
1224.TZ	120	1,2	1

Art. K1201.5



UNI	ISO	DIN
---	---	---

KIT PROFESSIONALE DI 5 UTENSILI PER BATTILAMIERA - RACCOMPOSTO DA MARTELLO A TESTA LISCIA TONDA E PENNA RICURVA ART.1201.TP, MARTELLO A DOPPIA TESTA LISCIA TONDA E QUADRA ART. 1202.TQ, MARTELLO A PENNA DIRITTA E TESTA TONDA AMMORTIZZATA CON EFFETTO ROTANTE ART. 1205.PA, TASSO LISCI CON PROFILO CURVO ART. 1221.TC, TASSO MULTIFUNZIONE ART. 1219.TM, FORNITO IN ROBUSTA VALIGETTA ANTIURTO.

PROFESSIONAL KIT OF 5 TOOLS FOR PANEL BEATER COMPOSED BY HAMMER WITH ONE ROUND FLAT HEAD AND ONE CURVED POINT ART.1201.TP, HAMMER WITH DOUBLE HEAD ONE ROUND FLAT AND ONE SQUARE FLAT ART.1202.TQ, HAMMER WITH ONE ROUND FLAT HEAD WITH SHOCK ABSORBING GUM AND KNURLED SURFACE WITH PIVOTING ACTION PLUS ONE STRAIGHT POINT ART. 1205.PA, DOLLY WITH CURVED FLAT SHAPE ART. 1221.TC, MULTIPURPOSE DOLLY SMALL SIZE ART. 1219.TM, SUPPLIED IN STRONG PLASTIC CASE

Art.	
K1201.5	1

Art. 1225.UP



UNI	ISO	DIN
---	---	---

SCALPELLO ULTRAPIATTO STRETTO REALIZZATO IN ACCIAIO SPECIALE AL CROMO-MOLIBDENO E LAMA AFFILATA, ALTEZZA IN PUNTA mm 4, LUNGHEZZA mm 235.

EXTRA-FLAT TIGHT CHISEL NAKED, MADE IN CHROME-MOLYBDENUM SPECIAL STEEL WITH SHARP BLADE, POINT HEIGHT mm 4, LENGHT mm 235

Art.	L mm	mm	
1225.UP	235	4	1

Art. 1225.P



UNI	ISO	DIN
---	---	---

SCALPELLO ULTRAPIATTO STRETTO CON PARAMANO DI PROTEZIONE, REALIZZATO IN ACCIAIO SPECIALE AL CROMO-MOLIBDENO E LAMA AFFILATA, ALTEZZA IN PUNTA mm 4, LUNGHEZZA mm 235.

EXTRA-FLAT TIGHT CHISEL WITH HAND PROTECTION, MADE IN CHROME-MOLYBDENUM SPECIAL STEEL WITH SHARP BLADE, POINT HEIGHT mm 4, LENGHT mm 235.

Art.	L mm	↑ mm	
1225.P	235	4	1

Art. 1226.UL



UNI	ISO	DIN
---	---	---

SCALPELLO ULTRAPIATTO LARGO REALIZZATO IN ACCIAIO SPECIALE AL CROMO-MOLIBDENO E LAMA AFFILATA, SPESSORE IN PUNTA mm 4, LARGHEZZA mm 60, LUNGHEZZA mm 250.

EXTRA-FLAT WIDE CHISEL NAKED, MADE IN CHROME-MOLYBDENUM SPECIAL STEEL WITH SHARP BLADE, POINT HEIGHT mm 4, WIDTH mm 60, LENGHT mm 250.

Art.	L mm	↔ mm	
1226.UL	250	60	1

Art. 1226.P



UNI	ISO	DIN
---	---	---

SCALPELLO ULTRAPIATTO LARGO CON PARAMANO DI PROTEZIONE, REALIZZATO IN ACCIAIO SPECIALE AL CROMO-MOLIBDENO E LAMA AFFILATA, SPESSORE IN PUNTA mm 4, LARGHEZZA mm 60, LUNGHEZZA mm 250.

EXTRA-FLAT WIDE CHISEL WITH HAND PROTECTION, MADE IN CHROME-MOLYBDENUM SPECIAL STEEL WITH SHARP BLADE, POINT HEIGHT mm 4, WIDTH mm 60, LENGHT mm 250.

Art.	L mm	↔ mm	
1226.P	250	60	1

Art. 1226.RP

UNI	ISO	DIN
---	---	---

RICAMBIO PARAMANO UNIVERSALE PER ART. 1225.P E 1226.P.

SPARE PART HAND PROTECTION FOR CHISELS ART. 1225.P AND 1226.P.

Art.	
1226.RP	1

Art. K1225.P2



UNI	ISO	DIN
---	---	---

KIT PROFESSIONALE 2 SCALPELLI DI ALTA QUALITA' PER BATTILAMIERA REALIZZATI IN ACCIAIO SPECIALE AL CROMO-MOLIBDENO E CON PARAMANO DI PROTEZIONE, COMPOSTO DA SCALPELLI ULTRAPIATTI LARGO E STRETTO ART. 1225.P E 1226.P.

PROFESSIONAL KIT OF 2 CHISELS OF HIGH QUALITY WITH HAND PROTECTION, MADE OF CHROME-MOLYBDENUM SPECIAL STEEL WITH SHARP BLADE TIGHT AND WIDE PROFILE ART. 1225.P AND 1226.P.

Art.	
K1225.P2	1

Art. 1227.ND



UNI	ISO	DIN
---	---	---

TASSO IN NYLON A DOPPIA FORMA PER PANNELLI IN ALLUMINIO.

DOUBLE SHAPE DOLLY FOR ALLUMINIUM PANELS MADE IN NYLON.

Art.	
1227.ND	1

Art. 1228.NT



UNI	ISO	DIN
---	---	---

SCALPELLO IN NYLON A LAMA TONDA PER PANNELLI IN ALLUMINIO.

ROUND BLADE CHISEL FOR ALLUMINIUM PANELS MADE IN NYLON.

Art.	
1228.NT	1

Art. 1229.NP



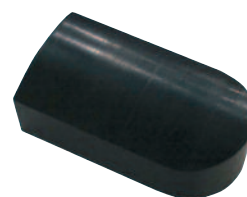
UNI	ISO	DIN
---	---	---

SCALPELLO IN NYLON A LAMA PIATTA PER PANNELLI IN ALLUMINIO.

FLAT BLADE CHISEL FOR ALLUMINIUM PANELS MADE IN NYLON.

Art.	
1229.NP	1

Art. 1230.NS



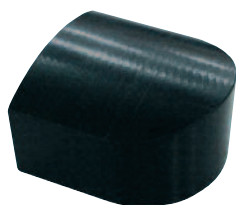
UNI	ISO	DIN
---	---	---

TAMPONE ARROTONDATO SOTTILE LUNGO N GOMMA.

ROUND SHAPE DOLLY SLIM TYPE FOR PANEL BEATER, MADE IN RUBBER.

Art.	
1230.NS	1

Art. 1231.NA



UNI	ISO	DIN
---	---	---

TAMPONE ARROTONDATO SPESSO E COMPATTO IN GOMMA.

ROUND SHAPE DOLLY THICK TYPE FOR PANEL BEATER, MADE IN RUBBER.

Art.	UNI	ISO	DIN	
1231.NA	---	---	---	1

Art. 1232.NP



UNI	ISO	DIN
---	---	---

MARTELLO PICCOLO IN GOMMA PER CARROZZIERE, LUNGHEZZA TESTA mm 120, LUNGHEZZA TOTALE mm 316.

SMALL PROFESSIONAL HAMMER FOR PANEL BEATER, MADE IN RUBBER.

Art.	L mm	UNI	ISO	DIN
1232.NP	120x316	---	---	1

Art. 1233.NG



UNI	ISO	DIN
---	---	---

MARTELLO GRANDE IN GOMMA PER CARROZZIERE, LUNGHEZZA TESTA mm 136, LUNGHEZZA TOTALE mm 319.

LARGE PROFESSIONAL HAMMER FOR PANEL BEATER, MADE IN RUBBER.

Art.	L mm	UNI	ISO	DIN
1233.NG	136x319	---	---	1

Art. 1234.S5



UNI	ISO	DIN
---	---	---

ASSORTIMENTO 5 TOGLIGRAFFE A PALETTA CON PROFILI SPECIALI PER INTERVENTI IN SPAZI RIDOTTI E CON ACCESSO DIFFICILE, LAME CROMATE CON IMPUGNATURA ERGONOMICA IN BIMATERIALE, PRESENTATE SU MODULO TERMOFORMATO.

ASSORTMENT OF 5 FLAT TRIM PIN REMOVERS WITH SPECIAL SHAPES FOR REDUCED SPACES AND DIFFICULT ACCESS, BLADES CHROME PLATED FINISH WITH BIMATERIAL ERGONOMIC HANDLES, SUPPLIED IN BLOWMOULD TRAY

Art.	UNI	ISO	DIN
1234.S5	---	---	1

Art. 1235.S4



UNI	ISO	DIN
---	---	---

ASSORTIMENTO 4 LEVE DA CARROZZIERE REALIZZATE IN ACCIAIO SPECIALE AL CROMO VANADIO, FINITURA LAME FOSFATATA CON IMPUGNATURA IN BIMATERIALE, LUNGHEZZA mm 610, 460, 360, 280, PRESENTATE SU MODULO TERMOFORMATO.

ASSORTMENT OF 4 PRY BARS FOR PANEL BEATER, MADE IN CHROME VANADIUM SPECIAL STEEL, BLACK PHOSPHATE FINISH WITH BIMATERIAL HANDLE, LENGHT mm 610, 460, 360, 280, SUPPLIED ON BLOW MOULD TRAY

Art.	UNI	ISO	DIN
1235.S4	---	---	1

Art. 1235.900



UNI	ISO	DIN
---	---	---

LEVA DA CARROZZIERE GRANDE REALIZZATA IN ACCIAIO SPECIALE AL CROMO VANADIO, FINITURA LAMA SATINATA CON IMPUGNATURA IN BIMATERIALE, LUNGHEZZA mm 900.

LARGE PRY BAR FOR PANEL BEATER MADE IN CHROME VANADIUM SPECIAL STEEL, SATIN FINISH WITH BIMATERIAL HANDLE, LENGHT mm 900.

Art.	L mm	UNI	ISO	DIN
1235.900	900	---	---	1

Art. 1236.S9



UNI	ISO	DIN
---	---	---

ASSORTIMENTO DI 9 LEVE E SCALPELLI DA CARROZZIERE REALIZZATE IN ACCIAIO SPECIALE, FORNITE IN VALIGETTA ANTIURTO.

ASSORTMENT OF 9 SPOONS AND CHISELS FOR PANEL BEATER IN SPECIAL STEEL, SUPPLIED IN BLOWMOULD CASE.

Art.	UNI	ISO	DIN
1236.S9	---	---	1

Art. 1240.PL



UNI	ISO	DIN
---	---	---

SUPPORTO PORTA LIMA DA CARROZZIERE IN LEGA D'ALLUMINIO E CON DOPPIA VITE DI REGOLAZIONE DELLA TENSIONE DELLA LIMA, LUNGHEZZA mm 360.

FILE HOLDER IN ALUMINIUM ALLOY AND DOUBLE SCREW FOR TENSION ADJUSTMENT FOR PANEL BEATER, LENGTH mm 360.

Art.	L mm	UNI	ISO	DIN
1240.PL	360	---	---	1

Art. 1241



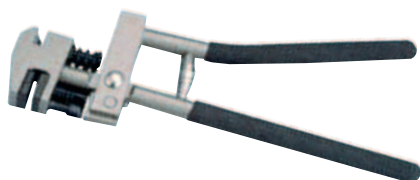
UNI	ISO	DIN
---	---	---

LIMA PIATTA DA CARROZZIERE CON DENSITA' DENTI PER POLLICE COME INDICATO IN TABELLA, LUNGHEZZA 350mm, DA MONTARE SUL SUPPORTO ART. 1240.PL.

FLAT FILE FOR PANEL BEATER WITH DENSITY OF TEETH PER INCH AS REPORTED ON THE CHART, LENGHT mm 350 TO BE FIT ON HOLDER ART. 1240.PL.

Art.	L mm	T in	
1241.9	350	9/"	1
1241.12	350	12/"	1

Art. 1242.FP



UNI ISO DIN

--- --- ---

PINZA FORATRICE E PIEGATRICE PER LAMIERA DI SPESSORE MASSIMO mm 0,8 CON DOPPIA TESTA RUOTABILE PER ESEGUIRE FORI DA Ø mm 5 E BORDATURE IN PIEGA DA mm 12, IDEALE PER RICOSTRUIRE I PUNTI DI SALDATURA USANDO LA SALDATRICE A FILO.

PIERCING AND FOLDING PLIER FOR PANELS WITH DOUBLE PIVOTING HEAD, HOLES Ø mm 5 AND BENT EDGES OF mm 12, IDEAL TO REPLACE THE ORIGINAL WELDING SPOTS WITH WIRE WELDER.

Art.	L mm	Ø mm	
1242.FP	290	5	1

Art. 1249.S33



UNI ISO DIN

--- --- ---

ASSORTIMENTO DI 33 ACCESSORI E LEVE FLESSIBILI IN ACCIAIO SPECIALE INOSSIDABILE, DA CARROZZIERE, PER RIMUOVERE DALL'INTERNO I BOLLII SUI PANNELLI IN LAMIERA.

ASSORTMENT OF 33 ACCESSORIES AND FLEXIBLE LEVERS IN SPECIAL STAINLESS STEEL FOR PANEL BEATER, TO REMOVE FROM INSIDE THE DENTS ON CAR PANELS.

Art.	UNI	ISO	DIN	
1249.S33	---	---	---	1

Art. 1250



UNI ISO DIN

--- --- ---

RILEVATORE DI PROFILI MILLIMETRATO PER LA RICOSTRUZIONE DEI PROFILI ORIGINALI DEI PANNELLI AUTO, LUNGHEZZA COME RIPORTATO IN TABELLA. CONTOUR GAUGE WITH MILLIMETRIC RULE, IDEAL TO REBUILD THE PANELS ORIGINAL PROFILE, LENGTH AS REPORTED ON THE CHART

Art.	L mm	UNI	ISO	DIN	
1250.120	120	---	---	---	1
1250.250	250	---	---	---	1

Art. 1251.S5



UNI ISO DIN

--- --- ---

ASSORTIMENTO PER CARROZZIERE DI 5 UTENSILI SPECIALI TOGLIGRAFFE E SPATOLE IN PLASTICA. ASSORTMENT FOR PANEL BEATER OF 5 CLIP AND SOFT PANEL REMOVERS MADE IN PLASTIC.

Art.	UNI	ISO	DIN	
1251.S5	---	---	---	1

Art. 1251.S6



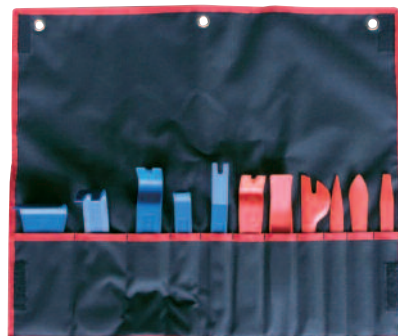
UNI ISO DIN

--- --- ---

ASSORTIMENTO PER CARROZZIERE DI 6 UTENSILI SPECIALI TOGLIGRAFFE E COLTELLI IN PLASTICA. ASSORTMENT FOR PANEL BEATER OF 6 CLIP REMOVERS AND KNIVES MADE IN PLASTIC.

Art.	UNI	ISO	DIN	
1251.S6	---	---	---	1

Art. 1251.SB11



UNI ISO DIN

--- --- ---

ASSORTIMENTO PER CARROZZIERE DI 5 UTENSILI TOGLIGRAFFE E SPATOLE (ART. 1251.S5) E DI 6 UTENSILI TOGLIGRAFFE E COLTELLI (ART. 1251.S6), REALIZZATI IN PLASTICA, PRESENTATI IN BUSTA IN TESSUTO DI NYLON RESISTENTE CON ANELLI DI AGGANCIO.

ASSORTMENT FOR PANEL BEATER OF 5 CLIP AND SOFT PANEL REMOVERS (ART. 1251.S5) AND 6 CLIP REMOVERS AND KNIVES (ART. 1251.S6), MADE IN PLASTIC, PRESENTED IN TEXTILE NYLON POUCH WITH DOUBLE SEWING AND STEEL RINGS.

Art.	UNI	ISO	DIN	
1251.SB11	---	---	---	1

Art. 1251.BN

BUSTA VUOTA IN TESSUTO DI NYLON RESISTENTE ED ANELLI DI AGGANCIO IN ACCIAIO PER CONTENERE 11 UTENSILI IN PLASTICA ART. 1251.S5 E 1251.S6.

EMPTY TEXTILE NYLON POUCH WITH DOUBLE SEWING AND STEEL RINGS FOR ART. 1251.S5 AND 1251.S6.

Art.	UNI	ISO	DIN	
1251.BN	---	---	---	1

Art. 1252.S3



UNI ISO DIN

--- --- ---

ASSORTIMENTO DI 3 CUNEI DA CARROZZIERE IN POLIAMMIDE.

ASSORTMENT OF 3 WEDGES FOR PANEL BEATER, MADE IN POLYAMMIDE.

Art.	UNI	ISO	DIN	
1252.S3	---	---	---	1

Art. 1253.TG



UNI	ISO	DIN
---	---	---

PINZA TOGLIGRAFFE IN PLASTICA A PRESSIONE CON MOLLA INTERNA.
CLIP REMOVAL PLIER WITH INTERNAL SPRING, FOR PRESSION CLIPS IN PLASTIC.

Art.				
1253.TG	---	---		1

Art. 1260.40

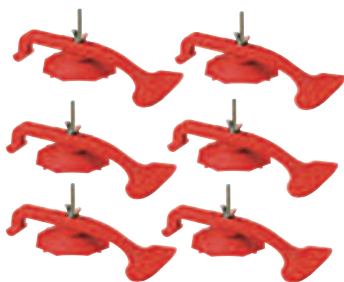


UNI	ISO	DIN
---	---	---

VENTOSA MANUALE CON SERRAGGIO A DOPPIA MANIGLIA PER SUPERFICI PIANE DA SOLLEVAMENTO E MANIPOLAZIONE, DIAMETRO mm 100, CAPACITA' DI TRATTENIMENTO 40 KG.
SUCTION CUP WITH DOUBLE HANDLE LOCKING SYSTEM FOR FLAT SURFACES FOR LIFTING AND MANIPULATION, DIAMETER mm 100, CAPACITY WEIGHT 40 KG.

Art.	Ø mm	kg	
1260.40	100	40	1

Art. 1261.S6



UNI	ISO	DIN
---	---	---

ASSORTIMENTO DI 6 FISSATORI A VENTOSA IN PLASTICA, IDEALI PER IL TRATTENIMENTO IN POSA DIVERSI COMPONENTI DURANTE LE OPERAZIONI DI INCOLLAGGIO.
ASSORTMENT OF 6 SUCTION CUPS IN PLASTIC, IDEAL TO KEEP IN POSITION VARIOUS COMPONENTS DURING GLUING OPERATIONS.

Art.			
1261.S6	---	---	1

Art. 1262



UNI	ISO	DIN
---	---	---

VENTOSA MANUALE MULTIFUNZIONE PER SUPERFICI PIANE DA SOLLEVAMENTO E MANIPOLAZIONE CON LEVA DI SGANCIO, DIAMETRO mm 110, CAPACITA' DI TRATTENIMENTO 20 KG.

MULTIFUNCTION SUCTION CUP FOR FLAT SURFACES FOR LIFTING AND MANIPULATION, WITH QUICK RELEASE, DIAMETER mm 110, CAPACITY MAX WEIGHT 20 KG.

Art.	Ø mm	kg	
1262	110	20	1

Art. 1270.S9



UNI	ISO	DIN
---	---	---

ASSORTIMENTO 9 ACCESSORI CON LEVA DI FORZA, MINI-CRICCHETTO DI AVVICINAMENTO ED INSERTI PER LE PORTIERE DELLE AUTOVETTURE, IN COMODA VALIGETTA ANTIURTO.

ASSORTMENT OF 9 ACCESSORIES WITH FORCE LEVER, MINI-RATCHET FOR APPROACHING AND BITS FOR CAR SIDE DOORS, SUPPLIED IN SMART BLOWMOULD CASE.

Art.			
1270.S9	---	---	1

Art. 1270.RI7

UNI	ISO	DIN
---	---	---

SERIE 7 INSERTI DI RICAMBIO PER ART. 1270.S9.
ASSORTMENT OF 7 SPARE PARTS BITS FOR ART. 1270.S9.

Art.			
1270.RI7	---	---	1

Art. 1271



UNI	ISO	DIN
---	---	---

STAFFA UNIVERSALE PER IL CENTRAGGIO E L'ALLINEAMENTO DELLE PORTIERE.
UNIVERSAL BAR FOR DOOR ALIGNING AND CENTERING.

Art.			
1271	---	---	1

Art. 1290.S46



UNI	ISO	DIN
---	---	---

ASSORTIMENTO DI 46 ACCESSORI PER GLI INTERVENTI DI MOVIMENTAZIONE E SMONTAGGIO RADIO/LETTORE CD, IN ELEGANTE VALIGETTA IN ALLUMINIO.

ASSORTMENT OF 46 ACCESSORIES FOR OPERATIONS OF UNFITTING AND REMOVING OF CAR RADIO AND CD PLAYERS, SUPPLIED IN SMART ALLUMINIUM CASE.

Art.			
1290.S46	---	---	1

Art. 1295.D5



UNI	ISO	DIN
---	CE	---

LUCIDATRICE ELETTRICA ANGOLARE A VELOCITA' VARIABILE CON STABILIZZATORE RETROAZIONATO DI VELOCITA', POTENZA 1200 W, ALIMENTAZIONE 230V- 50HZ, VELOCITA' REGOLABILE DA 1000 A 2400 RPM, DISCO PLATORELLO Ø 5" (mm 125), DISCO SOFFICE PER LUCIDARE FINO A Ø mm 150, PESO 2.3 KG, DESIGN ERGONOMICO, FORNITA CON IMPUGNATURA LATERALE ED INNOVATIVA IMPUGNATURA FRONTALE.

ANGULAR ROTARY POLISHER WITH ADJUSTABLE SPEED AND FEEDBACK SPEED STABILIZATION, POWER 1200 W, SUPPLY 230 V 50 HZ, SPEED FROM 1000 TO 2400 RPM, PAD Ø 5" (mm 125), SOFT PAD FOR POLISHING UP TO Ø mm 150, WEIGHT 2.3 KG, ERGONOMIC DESIGN, SUPPLIED WITH SIDE HANDLE AND INNOVATIVE FRONT HANDLE.

Art.	Ø mm	g/m	
1295.D5	125	1000-2400	1

Art. 1900